



# STUDENT LIFE





# Contents

03	YOUR STUDENTS' ASSOCIATION
05	MENTAL HEALTH BY ALISHA BAN
07	THE TIMES LAW AWARDS
09	BPP STUDENT ADVICE
12	HELPING THE ENVIRONMENT
13	UNIVERSITY PROJECTS
15	BPP CAREERS AND ALUMNI
17	EXAMS AT BPP
19	NURSING STUDENTS EXCURSION
20	OPPORTUNITIES FOR DISTANCE LEARNING STUDENTS
21 - 23	BPP CLUBS AND SOCIETIES
24	THIS IS FEEDBACK
25	INDEPENDENT ADVICE

# We are recruiting

Are you passionate about the Student Voice? BPP Students' Association are recruiting a new **President**

## MAIN DUTIES AND RESPONSIBILITIES:

- \* To represent student opinion and deliver papers where required at BPP's internal formal Academic committees
- \* Conduct annual elections to recruit and train new Student Voice Representatives.
- \* Organise and facilitate the annual Student Representatives' Away Day and produce the annual 'Student Written Submission'.
- \* Meet with and represent the views of students to Regulators and Professional Bodies such as the Quality Assurance Agency who will routinely visit BPP University.
- \* Conduct focus group sessions with BPP University students throughout the year across all programmes at all centres to gain students' feedback.

### Location:

London (with some national travel to BPP's regional centres required)

### Contract:

Full-time paid role, 12 months fixed term contract. 37.5 hours per week.

### Reports to:

Working alongside the Managing Director of the Students' Association with both the Managing Director and President reporting ultimately to the Board of Governors of the Independent Students' Association.

### Who can apply:

This vacancy is open to all BPP University students who have completed a BPP University programme after 1st December 2018 or are due to complete their programme before 31st August 2019.

To apply, visit:



[www.bppstudents.com](http://www.bppstudents.com)





# YOUR STUDENTS' ASSOCIATION TEAM



## SHAHBAN AZIZ MANAGING DIRECTOR

The Students' Association is here to help you make the most of your student experience and it consists of several parts:

- The Student Voice is key to ensuring that your views and opinions are heard across the university. My team and I work closely with the annually elected Student Voice Representatives who act as an independent voice for students on various academic committees and school boards, to ensure a positive experience for everyone, during their time at BPP University.
- The Independent Education and Welfare Advisers are here to help you when things don't go to plan. They provide an impartial, confidential service which is independent from the university and can help with academic and welfare issues such as appeals, complaints, deferrals, housing and wellbeing.
- The Student Engagement Team works closely with student-run clubs and societies across all centres to help offer a number of exciting opportunities for you to socialise, as well as to develop skills that will assist you with life in practice. The team works closely with the Student Centre Representatives to help organise social events at each BPP University study centre.

Make sure you visit [bppstudents.com](http://bppstudents.com) for more information and to join our vibrant student community.

I wish you all the best during your time at BPP University and look forward to meeting you all soon.

### Shahban Aziz

Managing Director, BPP Students' Association  
Head of Student Experience, BPP University  
[ShahbanAziz@bpp.com](mailto:ShahbanAziz@bpp.com)



**Hajra Babariya**  
Student Voice Manager

As your new Student Voice Manager I want to work in partnership with you to evaluate and enhance the student experience within the university. I am here to ensure that your opinions are valued and heard by the university.

I graduated from the University of Manchester with a degree in Computation. Whilst at university I also worked as a Student Representative and so I'm passionate about Student Voice and the Student Experience. I am always looking for ways to improve the service provided to the students throughout their academic life.

I believe that you have a vast amount of knowledge and expertise that can bring renewed authenticity and relevance to the classrooms benefiting your student life. Most importantly, we want to put the Student Voice at the heart of the university and I look forward to working with all students across all BPP centres.



**Azmat Suleman**  
Student Engagement Manager

I have been with BPP for over six years now and previously worked in the Student Advice Team.

I am passionate about improving the student experience here at BPP, by working closely with Centre presidents & clubs and societies to encourage social events and activities. I have knowledge and experience of managing large scale and small events ranging from guest speaker conferences, cultural events and parties.

I have previously worked in student support roles and have experience in helping both international and home students; I really enjoy working in this field and look forward to providing the best support possible to all BPP Students.



**Iain & Alison**  
Independent Advisors

The service that we provide is free and we work independently from the University to support you on resolving issues when things don't go to plan. This can range from offering feedback on Mitigating Circumstances or Academic Appeal applications to advising students on the Complaints procedure. We also offer representation to assist you at any University meetings or hearings such as Academic Misconduct Panels.

We are available to all students studying in the UK and in or partner centres across the globe.

You can get in touch with us via email on [independentadvice@bpp.com](mailto:independentadvice@bpp.com)



# MENTAL HEALTH BY ALISHA BAN

## ARE YOU WORRIED ABOUT YOUR HEALTH OR DISABILITY IMPACTING YOUR EXAMS AND DEADLINES?

Speak to the Learning Support Team for a Confidential Chat on Support Available.



Please contact [learningsupport@bpp.com](mailto:learningsupport@bpp.com) to enquire about the process of putting adjustments in place or to arrange a meeting to discuss any worries.

## DID YOU KNOW?

The Learning Support Team have worked with over 3000 students putting Reasonable Adjustments in place for exams and on course support. This helps students to meet their required deadlines whilst feeling supported. We work with students who have many different diagnosed health conditions/ disabilities to include learning difficulties and both physical and mental health conditions. We work with students who have both long term and short term conditions.

## COMMON STUDENT QUERIES

**“Most the time my health is good; I don’t know when it will negatively affect me”**

We provide Reasonable Adjustments to support students for this very reason. For example, if you have diagnosed Anxiety and it may be exasperated in exams we can offer rest breaks or extra writing time to support you. If you are able to finish the exam without using adjustments, that’s absolutely fine but the adjustments are there as a safety net to give you confidence to sit the exams.

**“I am struggling with my exams/ course but I don’t have a known diagnosis”**

Often we work with students who need support but have never spoken to anyone about it. Our Advisors can work with students to understand their barriers to learning and plan to get support. This often helps students to sit their exams on time feeling more prepared. We do require a months’ notice to put adjustments in place however if you are worried about obtaining evidence or feel you have left things last minute – please still have a chat with us as we do want to ensure you are aware of all your options!

**“If I get extra support in exams or on my course will my future employers find out?”**

Your information is kept confidential within our service and we would not disclose your medical evidence or arrangements to anyone outside of the university. Within the University we would also need your expressed consent to share any information.

**“I am worried about speaking about my health/ personal problems”**

We are a team of friendly and supportive Advisors who have a wealth of experience. We often have students speak to us for the first time about their worries and we ensure we offer a safe, empathetic and non-judgemental space.



# THE TIMES LAW AWARDS

WE ARE VERY PROUD TO ANNOUNCE THAT TWO OF OUR BPP STUDENTS WON 2ND AND 3RD PLACE IN THE TIMES LAW AWARDS THIS YEAR!

## 2019: Brexit:

A threat or an opportunity for UK lawyers and legal London?

Here is a snippet of their articles but you can visit <https://www.oelaw.co.uk/times-law-awards/winners> to read their full articles!

### Alexander Shaw

“The extent to which the UK legal sector profits from Brexit will depend less on its immediate response to UK withdrawal than on its capacity to remake itself in the long term. The question for law firms is whether they are capable of converting Brexit-type advisory work into a permanent strand of their future client relationships, by demonstrating the benefits of a joined up response to legal, political and commercial uncertainty. The question for the courts and the Bar is to what extent London gains a first-mover advantage in twenty-first century dispute resolution, beating European and global rivals. The opportunities of Brexit are integrally connected with a tide of disruption, driven by increased competition and new technology, which is transforming legal services globally – a tide which, to return to Lord Denning, ‘cannot be held back’. If responding to Brexit does not come at the expense of innovation, but acts as a spur to it, then legal London will retain its international standing in the face of economic and political risk.”



### Nyasha Weinberg

“Legal London will have to fight hard against a countervailing current that endorses an inward looking, jingoistic turn and the championing of global isolation. Unfortunately, this isn’t limited to Brexit: Britain’s withdrawal from the international scene, and diminished status, can be seen in our withdrawal of a candidate for the bench of the International Court of Justice, meaning there will be no British judge for the first time in the court’s 71-year history. English Common law, and its practitioners, has passed triumphantly through many previous crises. For legal London to weather this one will require a concerted effort to demonstrate and interest in the world beyond the English Channel, despite messages to the contrary. London will also have to fight against changes that come from tightened purse strings threatening parts of the legal system that underpin our reputation for, in the words of Kipling, “lawful judgement”.”





# Student Advice is moving online.

## Did you know?

BPP is launching an online student queries portal where our designated team will handle all your queries quickly and efficiently.

The new online queries portal allows you to access and request services at anytime, giving you the flexibility to focus on your studies.

You can access a wide range of academic and wellbeing support services throughout your time at BPP. Visit your VLE for more information.



### Step 1:

Log into VLE, go to the 'More' tab on the main page and click 'Student Query Form' If using a mobile device please scroll down to the bottom of the home page.

### Step 2:

Click on 'Launch Student Query' and complete the online form. Click Submit!

### Step 3:

Once submitted, your query will be automatically sent to the relevant team

### Step 4:

Once your query has been actioned you will receive a response to your BPP Email address.

Student ID Number
Contact Name
Phone
BPP Email Address (ending @my.bpp.com)
School
-Query Type-
-Query-Sub-Type-
-Study Location-
Description
Submit

If you would like to speak with us directly, please call us on **0330 060 3777** or [advice@bpp.com](mailto:advice@bpp.com)



# Student Advice is moving online.

## BPP is launching an online student queries portal where our designated team will handle all your queries quickly and efficiently.

### Academic Support Services

#### Personal Tutors/Programme Support Officers

Your Personal Tutor or Programme Support Officer is there to offer you advice, assistance and support with any academic and personal difficulties that may arise, ensuring that, where appropriate, any problems are made known to the relevant people at BPP University, and that you are referred to the relevant support services to help you with any issues that may be affecting your academic progress.

Visit your Programme Home Page for contact information

#### Independent Student Advice

Offer impartial and confidential advice, including help with academic issues such as appeals, complaints and deferrals.

✉ [Independentadvice@bpp.com](mailto:Independentadvice@bpp.com)

The new online queries portal allows you to access and request services at anytime, giving you the flexibility to focus on your studies.

You can access a wide range of academic and wellbeing support services throughout your time at BPP. Visit your VLE for more information.

### Wellbeing Support Services

#### Independent Student Advice

Offer impartial and confidential advice on a range of welfare and wellbeing issues

✉ [Independentadvice@bpp.com](mailto:Independentadvice@bpp.com)

#### International Student Advice

If you would like to contact or book an appointment with our International Advice team please email

✉ [Internationaladvice@bpp.com](mailto:Internationaladvice@bpp.com)

#### Learning Support

Offer impartial and confidential advice on a range of welfare and wellbeing issues

✉ [LearningSupport@bpp.com](mailto:LearningSupport@bpp.com)

#### Counselling

BPP also offers a free telephone and virtual counselling service to all students.

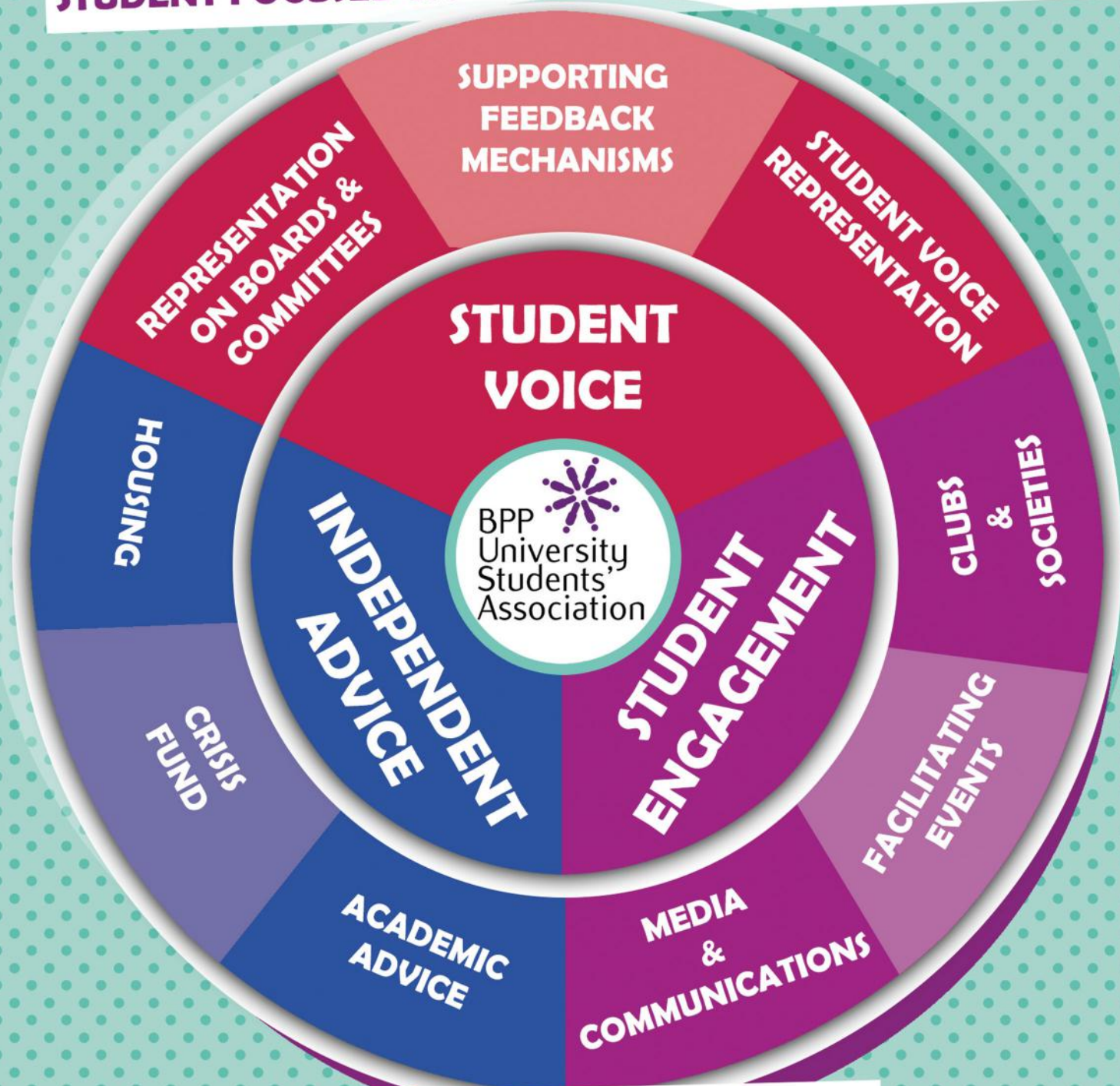
✉ [LearningSupport@bpp.com](mailto:LearningSupport@bpp.com)



# BPP UNIVERSITY

## INDEPENDENT STUDENTS' ASSOCIATION

STUDENT FOCUSED & STUDENT LED IN EVERYTHING WE DO



WHAT WE DO  
AND HOW WE DO IT

WWW.BPPSTUDENTS.COM

### HELPING THE ENVIRONMENT

As professional people, we all have our motivations.

Whether you come here to drive innovation, administer a cure, campaign for justice or balance the books, chances are you want to use your career to bring change and progress to the world.

As Health, Safety and Environmental Officer here at BPP, I have been incredibly fortunate to work with the Students' Association to work out how we can bring sustainability visions right to the very heart of how we operate. Here are some quick ways in which you can get involved...

**1. Bring your own bottle or re-usable travel mug**

Across the University, we've set targets to cut our use of single use plastic cups by 75%. We have begun removing plastic cups from water coolers, so that we can focus on sustainable alternatives. If we all work together, this is an easy way to make a huge difference.

**2. Look out for recycling points at your centre**

We all need to recycle more. We're planning to introduce better recycling facilities that will allow us to dodge contamination and collectively make a positive difference.

**3. Pack a lunchbox**

Call "it's a wrap" on packaging. Swap monstrous polystyrene boxes, landfill-destined forks, and ugly plastic bags for an easy-on-the-eye bamboo lunchbox... and save yourself a small fortune in the process!

**4. Join the discussion**

I'll be teaming up with the Students' Association to hold more focus groups in the future, and would love your involvement. Get in touch, share your ideas and help us to accomplish our greenest of goals. My email address is below.

**5. Be mindful of how your everyday decisions impact the environment**

Whether it's cutting back on printed materials or saying no to plastic straws, take a moment to consider how your actions can make a positive difference.

Yours sustainably,  
Amelia Cavinder – Health, Safety and Environmental Officer  
environmental@bpp.com



# UNIVERSITY PROJECTS

TO ENHANCE THE STUDENT EXPERIENCE

## BPP University Handbook and Student Induction Guide

BPP is always looking to improve the Student Experience at the University. To help students through the year, we aim to have one single document that will provide students with all the information they may require throughout their course. As a result of your feedback, from September the University Handbook and the Student Induction Guide will be combined into one consolidated document allowing students to refer to only this one essential document when necessary.



## Student Feedback and exciting upcoming University Projects

After receiving extensive student feedback from the National Student Survey and the BPP Student Experience Survey, the University is working on enhancing the Student Experience at BPP.

There are currently three exciting new projects being undertaken, of which two are outlined in this issue:

### Timetabling

Students requested a better way of viewing timetables to replace Webschedules. A project is being carried out to allow students to be able to view timetables on their Office 365 accounts. This means that all students will have visibility to their timetables on their office 365 calendars (through their BPP account) without having to log onto other systems to access. They will be able to see full information relating to that session such as names, locations, and times. We will inform you in the next magazine on the rollout date for this new and exciting development.

### Feedback on Assessment

BPP care about delivering quality feedback on your assessments and in the coming months the Education Services team are going to be raising awareness of all the different ways you can get feedback and feedforwards to support your learning. We will be asking you to tell us what you understand about feedback and working with student groups to enhance our feedback to you and deliver quality feedback on your work. Feedback is coming!

#ThisIsFeedbackBPP



# BPP CAREERS AND ALUMNI

The **BPP Careers** team provides you with the tools for you to compete and proceed in your career.

The **BPP Alumni** team connects you with our global alumni network and supports you through your career

What you can expect?

**STUDENTS:**

**ALUMNI:**

**NEXT STEP:**

## BPP CAREERHUB Run By Careers Team



### BPP's Online Portal for Careers Support

- Book Careers Events
- Find Job Opportunities
- View Career Resources & News
- Ask a Question to a Careers Consultant
- Schedule an Appointment with a Careers Consultant
- Ask an Online Librarian



- Receive Careers & CareerHub Support for 18 Months after your Course Finishes

**Login at**  
[Careerhub.bppuniversity.ac.uk](http://Careerhub.bppuniversity.ac.uk)

## GOINGLOBAL Provided by CareersTeam



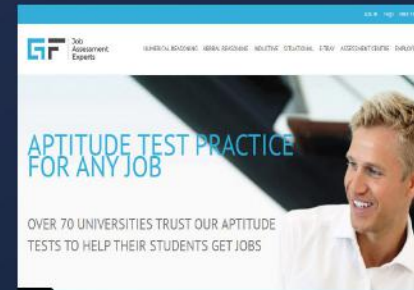
### Online Global Job Search Directory

- View Career Guides
- Search for Jobs
- 16 million+ jobs globally in local languages
- Find internships worldwide
- Explore Corporate Employer Profiles



**Login at**  
[GoinGlobal.com](http://GoinGlobal.com)

## GRADUATES FIRST Provided by CareersTeam



### Aptitude Test Online Practice

- Practice tests & check answers
- Verbal, Logical, Numerical, Situational Judgement Tests
- View Personal Dashboard & Track Progress
- Reports & Benchmarking
- Take a Work Personality Questionnaire



**Login at**  
[GraduatesFirst.com](http://GraduatesFirst.com)

## BPP COMMUNITY Run by Alumni Team



### BPP's Online Social Network - NEW - For BPP Students, Alumni, Staff, Clients

- Book events
- Reach Out to a Mentor
- Access Online Library Materials
- View Industry Articles and Opinions



Network with Fellow Students

Network with Alumni Worldwide  
Find Job Opportunities  
Become a Mentor  
Share your expertise

**Login at**  
[Community.bpp.com](http://Community.bpp.com)

## GRADUATE OUTCOMES Run by UK Government



### National Survey for Graduates Captures Perspective and Activities of Recent Graduates

- Share your BPP Story
- Help make things even Better for Current BPP Students



You will be Contacted 15 Months after your Course Finishes

**Keep your contact details up to date!**





### What can you expect during the exam?

As we are in the mist of the examination period, we thought that it would be helpful to let you know what you can expect on the day of your exam. Whether you are sitting in the main venue or have specific examination arrangements the rules below will apply

## EXAMS AT BPP

### Before your exam

1. The dates of your exams will be released to you on the VLE at the beginning of your course.
2. Your exams may take place at either at one of BPP centres or one of the external venues – please ensure that you check this information prior to your exam so that you know which venue you should be going to. We cannot guarantee that all your examinations will take place at the same venue (this will depend on the size of the exam and venue availability), therefore it is important not to assume that you are going to the same place as last time. The venue information is available from the VLE under Home > Assessments > Your programme

The venue information will be released on the VLE at least 2 weeks prior to the exam date. If you have specific arrangements for your exams, you will receive an email 2 weeks prior to the exam, detailing what the provisions will be.

3. As there are specific annotation rules, please familiarise yourself with these so that you can remove anything that should not be in your book prior to the exam and avoid having it confiscated on the day. Be aware that the materials will be checked at the beginning of each exam by the invigilators – we will do this as quickly as we can so we do not disturb you.
4. Lastly, please allow plenty of time to get to the venue! Include time that may take if the trains are delayed, you are stuck in traffic etc.

### On the day of the exam

1. Your desk number will be available on the day of the examination at the venue. Your SRN will appear on the list with the allocated desk number and the section you are in (we will have colour coded sections). The students will be let into the room between 15-30 mins prior to the exam. This is to give you plenty of time to find a seat and settle in.

You might be in a room with students studying other programmes/modules thus please do check that you are sitting in the right seat.

2. Once you are in the room, you are under examination conditions and therefore should not communicate with your colleagues or start reading the exam paper!

3. Shortly before the exam begins you will hear the examination instructions. You will be informed when you can start writing.

4. You will be given all the materials that you need for your exams so please just make sure you have your permitted materials with you. The rough paper is attached to the back of the exam paper.

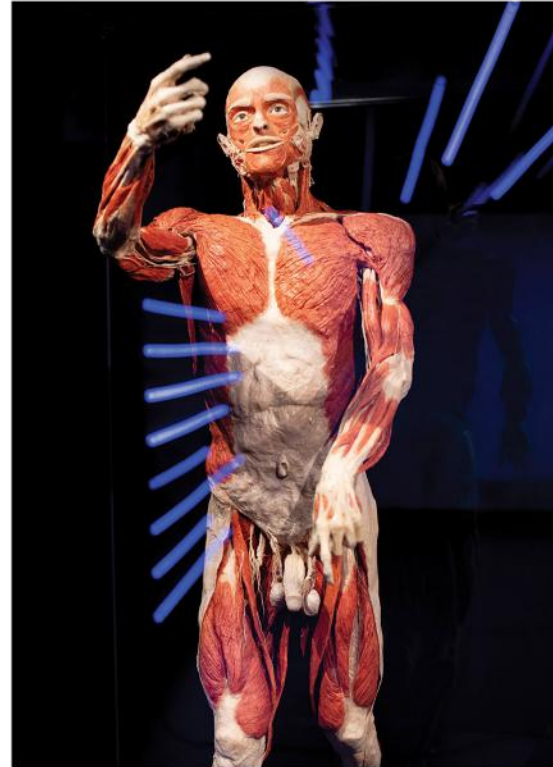
If you need any extra paper to write your answers on, indicate to the invigilator and they will give an answer booklet or some continuation sheets that you will need to attach to your main answer booklet.

5. We will give you time warnings before the exam will finish.

6. We will collect the answer booklets and other materials – you will not be permitted to take home any other materials we give you. We then have to count the papers to make sure that we collected all of them. Once we have them all, we will let you leave the examination room.



# NURSING STUDENTS EXCURSION



During the month of April and to enhance their learning within the anatomy and physiology module of the BPP University adult nursing degree course, 37 nurse degree apprentices from University Hospital Southampton, Royal Hampshire County Hospital and North Hampshire Hospital attended the Body Worlds Exhibition at Piccadilly Circus, London. This incredibly interesting exhibition showcases a collection of preserved deceased persons, known as plastinates, who have donated their bodies for the education of health care professionals and the interest of lay persons.

The exhibition is fascinating, and students spent many hours absorbing the detail within the displays there and found it very helpful seeing how all the different organs are positioned and work within the human body. Photography within the exhibition is prohibited so the images of plastinates shown have been obtained from the press team at the Body Worlds exhibition.

Invented by Dr Gunther von Hagens in 1977 at the University of Heidelberg, Germany, plastination is a process that strips away layers of the human body, stops the decomposition of the body and produces solid, odourless and durable anatomical specimens.



The exhibition is set out by system; very handy considering the way the course is structured and an audio commentary is provided to aid in understanding what is being viewed. There are also some interactive exhibits where you can check your own blood measure, practice CPR and spend time in a calming zone.

# OPPORTUNITIES FOR DISTANCE LEARNING STUDENTS

## ARE YOU A DISTANCE LEARNING STUDENT AND WANT TO BUILD ON THE SENSE OF COMMUNITY ALONGSIDE YOUR STUDIES?

We are the perfect society for you! Our society is flexible to allow our members (from across the globe) to contribute and help shape the platform into what we want and need it to be.

Whether discussing Kim K becoming a lawyer, talking through model answers, revision techniques or arranging a local meet-up with fellow students in your hometown (to name a few examples) ... it is an inclusive space where we want to encourage a greater sense of community for Distance Learning students, wherever they might live in the world.

If you would like to register, please email Ella on [e.wellington2@my.bpp.com](mailto:e.wellington2@my.bpp.com) from your BPP email address.

We are also hoping to expand our committee, and really welcome any suggestions on how we can better our society, please email Ella to express your interest.







# NOW RECRUITING: BPP CRICKET SQUAD

HAVE YOU EVER WANTED TO BE A CRICKETER

REGISTER AT: [WWW.BPPSTUDENTS.COM/ORGANISATION/8249](http://WWW.BPPSTUDENTS.COM/ORGANISATION/8249)



**Congratulations** to the new executive members who now make up the BPP Cricket Squad Committee.

**President:** Kamara Lee

**Vice President:** Chhavi Agarwal

**Secretary:** Vidhi Sarvaiya

**Treasurer:** Sunnan Farukh

**Operations Manager:** Sheikh Arsalan

**Communications Manager:** Bonny Patel

The all-new BPP Cricket Squad was founded on the 27th February 2019, standing on its own two feet and preparing to achieve great things this sports club welcomes both male and female players from all BPP centers.

"The long-term vision for the new club is to host inter-center competitions where teams across BPP campuses can compete. The best players from each center will be chosen to play on the official BPP University cricket Squad" - BPP Cricket Squad President

**INTERESTED IN JOINING THE CRICKET TEAM?**  
Send us a Facebook message or join the WhatsApp group for details

**FACEBOOK:**

**@BPPCRICKETSQUAD**



SCAN CODE



**JOIN TODAY:**





# YOGA FLOW

Wednesdays at BPP Holborn

Going to a yoga studio can be daunting, which is why we've brought the yoga to you for only £3!

Whether you need to relax or just move your body, this 45-minute yoga flow class is perfect for you.

Suitable for all levels and abilities! All you need is comfortable clothes and a mat or towel.



Class times vary so please email Anastasia at [a.frolova@my.bpp.com](mailto:a.frolova@my.bpp.com) to join the mailing list and be updated weekly.

## THIS IS FEEDBACK!

Our new campaign

BPP care about delivering quality feedback on your assessments and in the coming months Education Services will be raising awareness of all the different ways you can receive feedback and how this can feedforward to support your learning. We would like you to tell us what you think feedback is and would like to work with you the students to enhance our feedback to you and deliver quality feedback on your work.

[#ThisIsFeedbackBPP](#)





# INDEPENDENT EDUCATION & WELFARE ADVISORS

RECENT CHANGES that you need to be aware of

## ONLINE SUBMISSIONS REQUIRED

The process to submit either a Mitigating Circumstances or Academic Appeal application has now changed. The University is no longer accepting paper applications by post or hand and all applications now need to be completed ONLINE here (<https://www.bpp.com/login>)

## KEEPING YOUR RESULTS

Before submitting an application please be aware that if accepted your application automatically disregards the results of your assessments, therefore you need to be absolutely sure that you wish to take these assessments again before applying.

For further information on all aspects please visit our page Independent Advice on our website [www.bppstudents.com](http://www.bppstudents.com)

# Did something go wrong before or during your assessment?

were you feeling ill or poorly?

were you admitted to hospital as a result of an accident?

**GET IN TOUCH with us at**

[independentadvice@bpp.com](mailto:independentadvice@bpp.com)

and we will guide you through the new online process.





Interested in  
Setting up  
a Club or Society



we will help you every step of the way

Email us at

[engage@bpp.com](mailto:engage@bpp.com)